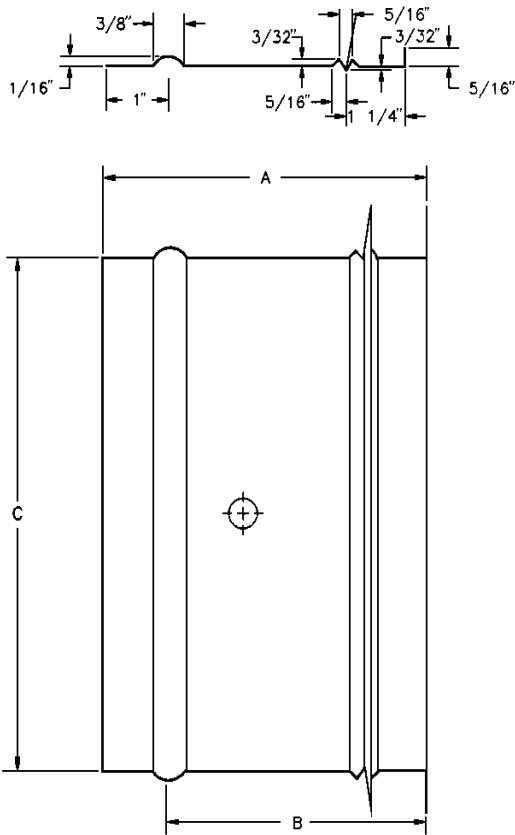


# PRODUCT SPECIFICATIONS

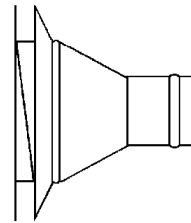
MODULAR METAL FABRICATORS INC.

## Duct Board Spin-in - Specifications

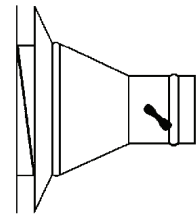
### DB 1 SERIES



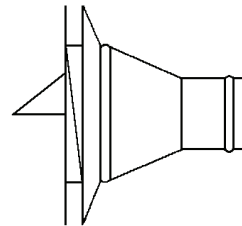
### DB 2 SERIES



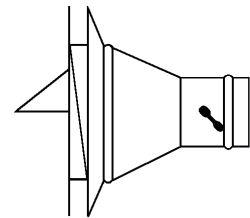
DB-2C



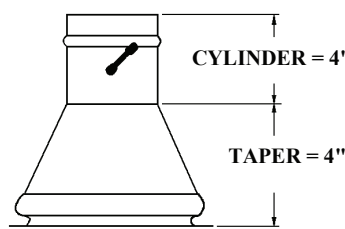
DB-2D



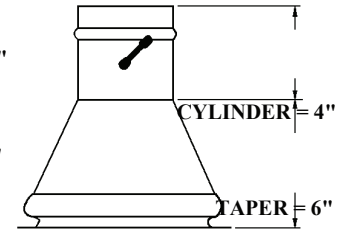
DB-2EL



DB-2DEL



SM2 SERIES 4" - 9"



SM2 SERIES 10" - 18"

DB - 1C				DB - 1D			
SIZE	A	B	C	SIZE	A	B	C
4"	3 3/4"	2 3/4"	3 3/4"	4"	5 3/4"	4 3/4"	3 3/4"
5"	3 3/4"	2 3/4"	4 3/4"	5"	5 3/4"	4 3/4"	4 3/4"
6"	3 3/4"	2 3/4"	5 3/4"	6"	5 3/4"	4 3/4"	5 3/4"
7"	3 3/4"	2 3/4"	6 3/4"	7"	8 3/4"	6 3/4"	6 3/4"
8"	3 3/4"	2 3/4"	7 3/4"	8"	8 3/4"	6 3/4"	7 3/4"
9"	3 3/4"	2 3/4"	8 3/4"	9"	8 3/4"	6 3/4"	8 3/4"
10"	5 3/4"	4 3/4"	9 3/4"	10"	8 3/4"	6 3/4"	9 3/4"
12"	5 3/4"	4 3/4"	11 3/4"	12"	11 3/4"	8 3/4"	11 3/4"
14"	5 3/4"	4 3/4"	13 3/4"	14"	11 3/4"	8 3/4"	13 3/4"
16"	5 3/4"	4 3/4"	15 3/4"	16"	11 3/4"	10 3/4"	15 3/4"
18"	5 3/4"	4 3/4"	17 3/4"	18"	11 3/4"	10 3/4"	17 3/4"

PIPE SIZE	APPROX. TAPER HOLE SIZE	CYLINDER HEIGHT	TAPER HEIGHT	LENGTH OF EXTRACTOR
4"	6"	4"	4"	1 1/2"
5"	7"	4"	4"	2 1/8"
6"	8"	4"	4"	2 5/8"
7"	9"	4"	4"	3 7/16"
8"	10"	4"	4"	3 3/4"
9"	11"	4"	4"	4 3/8"
10"	13"	4"	6"	4 9/16"
12"	15"	4"	6"	5 3/8"
14"	17"	4"	6"	6 1/4"
16"	19"	4"	6"	7 1/8"
18"	21"	4"	6"	8"

NOTE: SEE DB2 SERIES DIMENSION CHART FOR EXTRACTOR LENGTHS OF DB1's →