

MODULAR METAL FABRICATORS INC.

PRODUCT SPECIFICATIONS

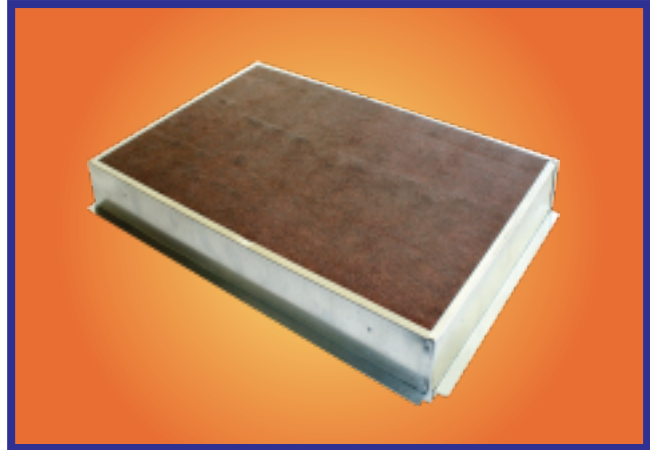
Duct Board Top Boxes

DESCRIPTION

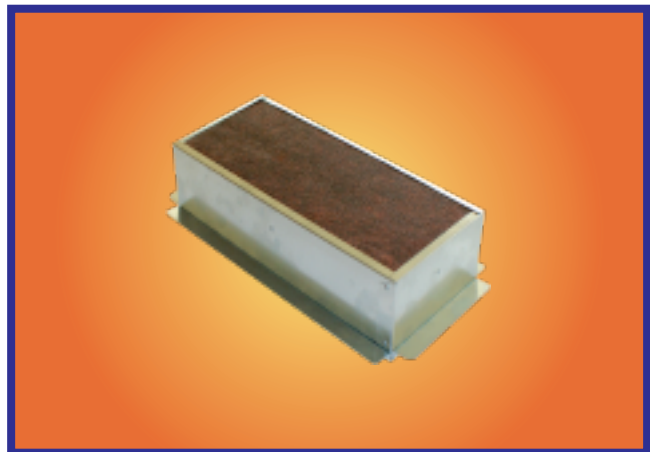
Duct board Outlet and Return Air Boxes are manufactured with a galvanized steel body meeting ASTM 653-05A with a 1" thick Owens Corning Quiet R duct board top. The Quiet R duct board carries an R-Value of 4.30 with a K-Value of 0.23 and a C-Value of 0.23.

These lightweight boards absorb fan and air turbulence noise, and reduce popping noises caused by expansion, contraction and vibration.

Return



Outlet



Utilizing Owens Corning Fiberglass
With Green Guard Certification